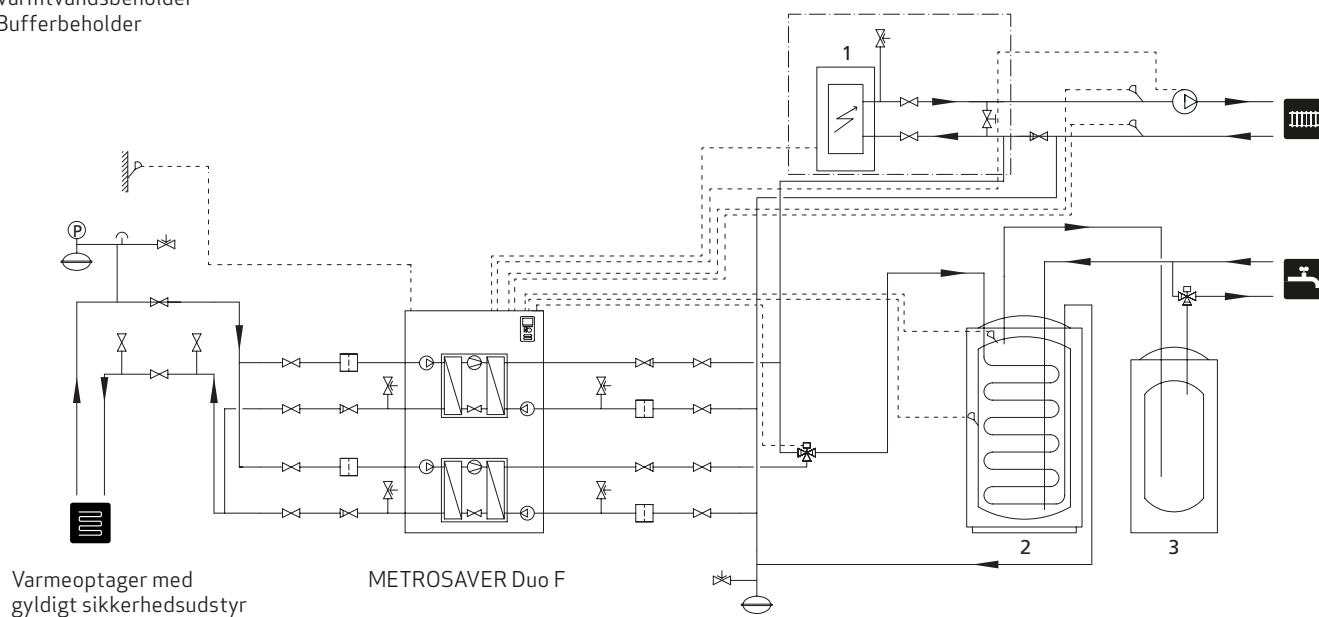


METROSAVER Duo F

Datablad


- 1 Evt. eksternt eltilskud
- 2 Varmtvandsbeholder
- 3 Bufferbeholder



Supplier's name:	METRO THERM A/S		
Model:	METROSAVER Duo F 28		
Temperature application	35	55	°C
Declared load profile for water heating			
Seasonal space heating energy efficiency class, average climate:	A+++	A+++	
Water heating energy efficiency class, average climate:			
Rated heat output, average climate:	28	28	kW
Annual energy consumption for space heating, average climate	11528	14621	kWh
Annual electricity consumption for water heating, average climate			kWh
Seasonal space heating energy efficiency, average climate:	198	155	%
Water heating energy efficiency, average climate:			%
Sound power level LWA indoors	47		dB
Rated heat output, cold climate:	28	28	kW
Rated heat output, warm climate:	28	28	kW
Annual energy consumption for space heating, cold climate	12907	16450	kWh
Annual electricity consumption for water heating, cold climate			kWh
Annual energy consumption for space heating, warm climate	7237	9062	kWh
Annual electricity consumption for water heating, warm climate			kWh
Seasonal space heating energy efficiency, cold climate:	211	165	%
Water heating energy efficiency, cold climate:			%
Seasonal space heating energy efficiency, warm climate:	204	162	%
Water heating energy efficiency, warm climate:			%
Sound power level LWA outdoors	-		dB

Data for package fiche


Controller class	VII		
Controller contribution to efficiency	2		%
Seasonal space heating energy efficiency of package, average climate:	200	157	%
Seasonal space heating energy efficiency class for package, average climate:	A+++	A+++	%
Seasonal space heating energy efficiency of package, cold climate:	213	167	%
Seasonal space heating energy efficiency of package, warm climate:	206	164	%

Model(s):				METROSAVER Duo F 28				<div></div>			
Type of heat source/sink:				Brine-to-water							
Low-temperature heat pump:				No							
Equipped with supplementary heater:				No							
Heat pump combination heater:				No							
Climate condition:				Average							
Temperature application:				Medium temperature (55 °C)							
Applied standards: EN14825 and EN16147											
Rated heat output			Prated	28,0	kW	Seasonal space heating energy efficiency			η_s	155	%
<i>Declared capacity for part load at outdoor temperature Tj</i>						<i>Declared coefficient of performance for part load at outdoor temperature Tj</i>					
Tj = -7 °C	Pdh	25,0	kW	Tj = -7 °C	COPd	3,10	-				
Tj = +2 °C	Pdh	15,3	kW	Tj = +2 °C	COPd	3,90	-				
Tj = +7 °C	Pdh	9,7	kW	Tj = +7 °C	COPd	4,60	-				
Tj = +12 °C	Pdh	4,3	kW	Tj = +12 °C	COPd	5,30	-				
Tj = biv	Pdh	28,0	kW	Tj = biv	COPd	2,80	-				
Tj = TOL	Pdh	28,0	kW	Tj = TOL	COPd	2,80	-				
Tj = -15 °C (if TOL < -20 °C)	Pdh		kW	Tj = -15 °C (if TOL < -20 °C)	COPd		-				
Bivalent temperature	T _{biv}	-10	°C	Operation limit temperature			TOL	-10	°C		
Cycling interval capacity for heating	P _{cyh}		kW	Cycling interval efficiency			COP _{cyh}		-		
Degradation co-efficient	Cdh	0,99	-	temperature			WTOL	65	°C		
<i>Power consumption in modes other than active mode</i>						<i>Supplementary heater</i>					
Off mode	P _{OFF}	0,007	kW	Rated heat output			P _{sup}	0,0	kW		
Thermostat-off mode	P _{TO}	0,035	kW								
Standby mode	P _{SB}	0,019	kW	Type of energy input			Electric				
Crankcase heater mode	P _{CK}	0,025	kW								
<i>Other items</i>											
Capacity control	variable			Rated air flow rate, outdoors					m³/h		
Sound power level, indoors/outdoors	L _{WA}	47/-	dB	Rated water flow rate, indoor heat exchanger					m³/h		
Annual energy consumption	Q _{HE}	14621	kWh	Rated brine or water flow rate, outdoor heat exchanger			3,40		m³/h		
<i>For heat pump combination heater:</i>											
Declared load profile						Water heating energy efficiency			η_{wh}		%
Daily electricity consumption	Q _{elec}					kWh	Daily fuel consumption			Q _{fuel}	
Annual electricity consumption	AEC		kWh	Annual fuel consumption			AFC		GJ		
Approved by:											
Contact details		METRO THERM A/S Rundinsvej 55 DK-3200 Helsingør www.metrotherm.dk									

Supplier's name:	METRO THERM A/S		
Model:	METROSAVER Duo F 43		
Temperature application	35	55	°C
Declared load profile for water heating			
Seasonal space heating energy efficiency class, average climate:	A+++	A+++	
Water heating energy efficiency class, average climate:			
Rated heat output, average climate:	45	42	kW
Annual energy consumption for space heating, average climate	18588	21700	kWh
Annual electricity consumption for water heating, average climate			kWh
Seasonal space heating energy efficiency, average climate:	192	152	%
Water heating energy efficiency, average climate:			%
Sound power level LWA indoors	47		dB
Rated heat output, cold climate:	45	42	kW
Rated heat output, warm climate:	45	42	kW
Annual energy consumption for space heating, cold climate	21011	24977	kWh
Annual electricity consumption for water heating, cold climate			kWh
Annual energy consumption for space heating, warm climate	11463	13776	kWh
Annual electricity consumption for water heating, warm climate			kWh
Seasonal space heating energy efficiency, cold climate:	203	158	%
Water heating energy efficiency, cold climate:			%
Seasonal space heating energy efficiency, warm climate:	202	155	%
Water heating energy efficiency, warm climate:			%
Sound power level LWA outdoors	-		dB

Data for package fiche

Controller class	VII		
Controller contribution to efficiency	2		%
Seasonal space heating energy efficiency of package, average climate:	194	154	%
Seasonal space heating energy efficiency class for package, average climate:	A+++	A+++	%
Seasonal space heating energy efficiency of package, cold climate:	205	160	%
Seasonal space heating energy efficiency of package, warm climate:	204	157	%

Model(s):				METROSAVER Duo F 43				<div></div>			
Type of heat source/sink:				Brine-to-water							
Low-temperature heat pump:				No							
Equipped with supplementary heater:				No							
Heat pump combination heater:				No							
Climate condition:				Average							
Temperature application:				Medium temperature (55 °C)							
Applied standards: EN14825 and EN16147											
Rated heat output			Prated	42,0	kW	Seasonal space heating energy efficiency			η_s	152	%
<i>Declared capacity for part load at outdoor temperature Tj</i>						<i>Declared coefficient of performance for part load at outdoor temperature Tj</i>					
Tj = -7 °C			Pdh	36,5	kW	Tj = -7 °C			COPd	3,10	-
Tj = +2 °C			Pdh	26,6	kW	Tj = +2 °C			COPd	3,90	-
Tj = +7 °C			Pdh	13,3	kW	Tj = +7 °C			COPd	4,70	-
Tj = +12 °C			Pdh	7,8	kW	Tj = +12 °C			COPd	5,40	-
Tj = biv			Pdh	40,1	kW	Tj = biv			COPd	2,80	-
Tj = TOL			Pdh	40,1	kW	Tj = TOL			COPd	2,80	-
Tj = -15 °C (if TOL < -20 °C)			Pdh		kW	Tj = -15 °C (if TOL < -20 °C)			COPd		-
Bivalent temperature			T _{biv}	-10	°C	Operation limit temperature			TOL	-10	°C
Cycling interval capacity for heating			P _{cyh}		kW	Cycling interval efficiency			COP _{cyh}		-
Degradation co-efficient			Cdh	1,00	-	temperature			WTOL	65	°C
<i>Power consumption in modes other than active mode</i>						<i>Supplementary heater</i>					
Off mode			P _{OFF}	0,008	kW	Rated heat output			P _{sup}	0,0	kW
Thermostat-off mode			P _{TO}	0	kW						
Standby mode			P _{SB}	0,008	kW	Type of energy input			Electric		
Crankcase heater mode			P _{CK}	0,02	kW						
<i>Other items</i>											
Capacity control			variable			Rated air flow rate, outdoors					m³/h
Sound power level, indoors/outdoors			L _{WA}	47/-	dB	Rated water flow rate, indoor heat exchanger					m³/h
Annual energy consumption			Q _{HE}	21700	kWh	Rated brine or water flow rate, outdoor heat exchanger				5,92	m³/h
<i>For heat pump combination heater:</i>											
Declared load profile						Water heating energy efficiency			η_{wh}		%
Daily electricity consumption			Q _{elec}		kWh	Daily fuel consumption			Q _{fuel}		kWh
Annual electricity consumption			AEC		kWh	Annual fuel consumption			AFC		GJ
Approved by:											
Contact details			METRO THERM A/S Rundinsvej 55 DK-3200 Helsingør www.metrotherm.dk								